

# WALK THE HERITAGE TRAIL

Our tour begins on the bridge over the railway line. Look down Victoria Road towards the countryside beyond the village. Salt's most influential idea was to relocate his entire business to a greenfield site in order to escape the chaos of Bradford. Bradford was a crowded and unhealthy place to live with limited space for a factory on the scale Salt envisaged.

Continue downhill along Victoria Road, passing the impressive **2** Saltaire United Reformed Church on the left until you reach the canal bridge. Despite its rural location Saltaire was not isolated. Salt wanted to distribute his products quickly and cheaply so he chose a site with excellent transport links. The Mill was built beside the railway, the motorway of the nineteenth century. The canal linked the village to Leeds and Liverpool and there were good local road connections.

Turn left down the ramp and follow the path around to the right to cross the River Aire by the modern footbridge. Salt believed leisure was good for his workers' health, particularly as a distraction from the temptations of alcohol.

**4** Roberts Park was included in Salt's plans from an early stage and it was completed in 1871.

Retrace your steps back to the Railway Bridge and look towards the mill chimney. Can you feel a breeze behind you? Salt was concerned about the harmful effects of smoke produced by factories and located his mill where the prevailing westerly winds would blow the smoke away from the village.

**5** The Mill is clearly separated from the housing by the allotments where workers could grow their own food. This zoning approach was copied at other company towns and is echoed today by concentrating noisy and dirty businesses in industrial estates.

Turn around and walk down the cobbled Albert Terrace. Then turn left into William Henry Street. The three storey houses originally provided shared lodgings for single workers. Small front gardens and more spacious houses were provided for the 'overlookers', the foremen of the factory floor. Turn right onto Caroline

Street. Here the front doors of the properties open straight onto the street indicating that they were for lower paid employees. As you walk along you will see the streets branch off at regular intervals.

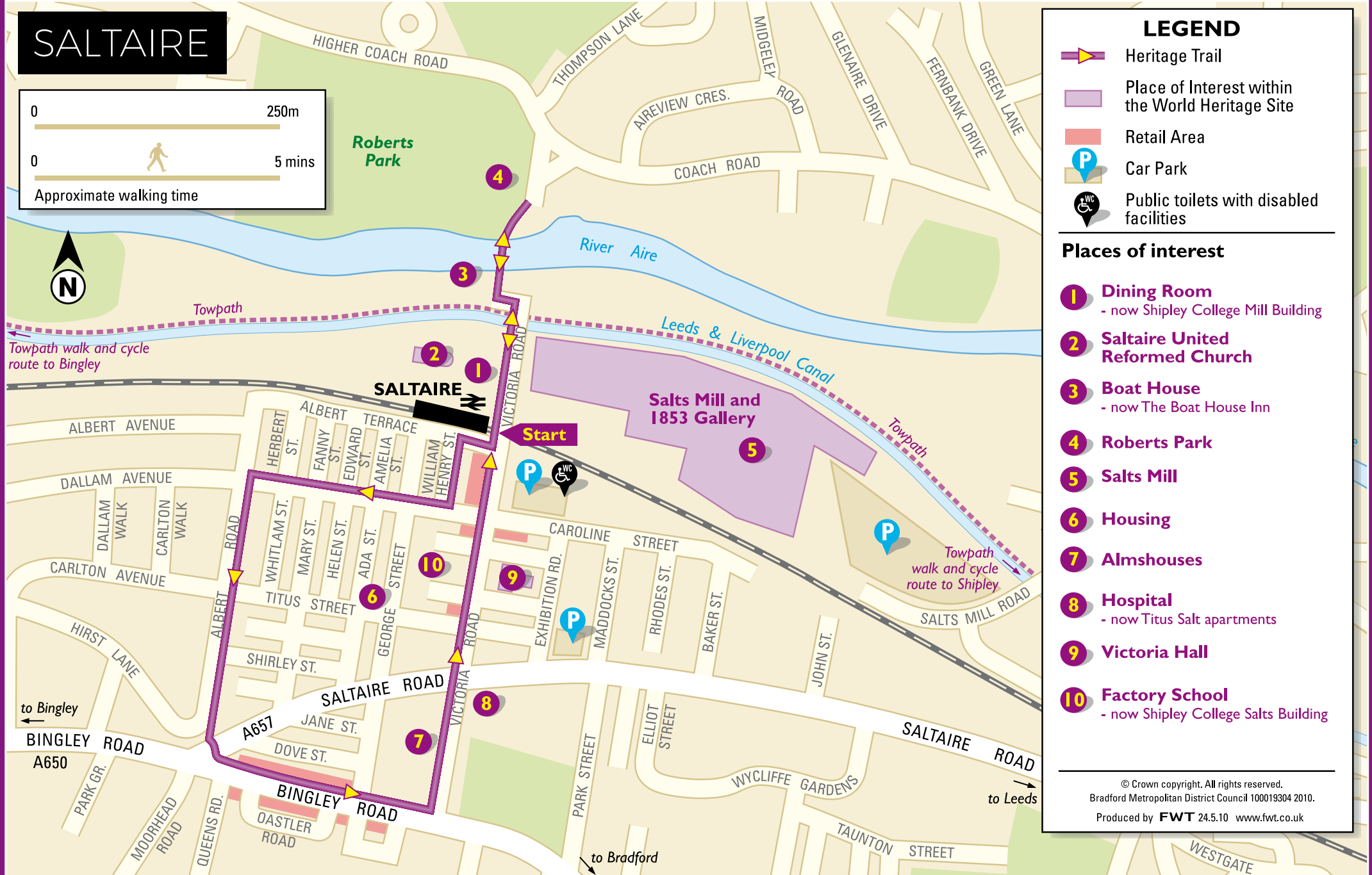
**6** This grid pattern was chosen to use the available land efficiently. Although the houses are close together, Lockwood and Mawson ensured that their height in relation to the width of the road allowed each house to receive ample daylight.

Continue to the junction with Albert Road. Here turn left uphill. First you will pass a row of 'overlookers' houses before finding the grandest semidetached residences, home to the company's executives, teachers and the church minister. Originally they had fine views over open country.

At the top of Albert Road, turn left and use the zebra crossing to cross Saltaire Road. Continue straight ahead and then walk left around the corner to reach Bingley Road. Continue along

Bingley Road and then turn left into Victoria Road. Grouped around Alexandra Square are **7** the Almshouses. This pleasant green is one of several open areas located at regular intervals along Victoria Road. Spaces like these were normally found only in the most affluent areas of Victorian towns. Continue downhill until you reach the crossroads, where the former **8** Hospital building stands at the corner. Use the pedestrian crossing to continue along Victoria Road. You will soon reach two of the finest buildings in the village, the School on the left and the Institute **9** on the right. They are set back from Victoria Road with an open space in front to form Victoria Square. Named in honour after the Queen, Victoria Road linked all the community facilities and important buildings together, creating another distinct zone within the village.

Continue along Victoria Road past the row of shops to complete your tour where it began at the railway bridge.



## STAY IN THE KNOW

Keep up to date and tell us what you are up to through social media, we are on Facebook, Twitter and Instagram as VisitBradford.

Bradford has a brilliant and exciting annual events programme. To find out about what's on throughout the year visit [www.visitbradford.com/events](http://www.visitbradford.com/events)

Look out for our Discover Guides, available for Haworth and Brontë Country, Ilkley and Bradford. We can also provide a full Bradford Visitor Guide that covers the whole of Bradford and District. Contact our helpful team on **01274 433678** or go to our website [www.visitbradford.com](http://www.visitbradford.com)

Don't forget use [#visitbradford](#) in your posts and tweets so we can share, like and retweet.

### VISITOR INFORMATION

Contact us for more information to help plan your visit including

Tel: **01274 433678**  
Email: [bradford.vic@bradford.gov.uk](mailto:bradford.vic@bradford.gov.uk)  
Website: [www.visitsaltaire.com](http://www.visitsaltaire.com)

There are several buses from Bradford to Saltaire: 662, 622, 623, 675, 677. For information on public transport in West Yorkshire visit [www.wymetro.com](http://www.wymetro.com) or call 0113 245 7676

**BUS**  
Take a train from Bradford Forster Square (10 min journey) or a train from Leeds (15 min journey).

**RAIL**  
Car park destination and GPS postcodes: Saltaire Road/Exhibition Road car park: BD18 3JW, Victoria Road/Caroline Street car park: BD18 3LF (Pay and Display)

Salts Mill car park: BD17 7EF (Free for visitors) Once on Salts Mill Road continue to the very end until you see the car park.

Contact us for more information to help plan your visit including accommodation and special events.

Website: [www.visitsaltaire.com](http://www.visitsaltaire.com)

## GETTING TO SALTAIRE

Church now a Grade 1 listed building. The housing provided was of the highest quality. Each had a water supply, gas lighting, an outdoor privy, separate living and cooking spaces and several bedrooms. This compared favourably with the typical worker's cottage. Salt was also one of the greatest Victorian philanthropists. He donated liberally to good causes locally and nationally. Almshouses were provided rent-free for the elderly and sick in Saltaire. They came with a pension, forty years before the first state pensions in the United Kingdom.

By the 1980s the British textile industry was in steep decline. Production was scaled back and Salts Mill was finally closed in 1986. To the rescue came another entrepreneur, Jonathan Silver who bought the Mill and within months opened a gallery exhibiting the work of Bradford-born artist David Hockney. During the 1990s more of the mill was brought back into use and filled with businesses, shops and the famous Salts Diner.

Saltaire was inscribed on the UNESCO World Heritage List in 2001. It was recognised for its international influence on town planning and as one of the earliest, largest and best preserved nineteenth century 'model villages' anywhere in the world.

Lockwood and Mawson designed the first building to be completed in 1853. continued until 1876. Salts Mill was the productive. Work began in 1851 and would be healthier, happier and more a new community where Salt's workforce Richard Mawson, were employed to plan relocate his business and his employees. By the 1980s the British textile industry was in steep decline. Production was scaled back and Salts Mill was finally closed in 1986. To the rescue came another entrepreneur, Jonathan Silver who bought the Mill and within months opened a gallery exhibiting the work of Bradford-born artist David Hockney. During the 1990s more of the mill was brought back into use and filled with businesses, shops and the famous Salts Diner.

Saltaire takes its name from its founder, Sir Titus Salt (1803-1876), and the River Aire, which runs through the village. Salt made his fortune in the Bradford textile industry, manufacturing fine woollen fabrics. Determined to escape the polluted and overcrowded town centre for greener pastures, he made a bold decision to relocate his business and his employees. By the 1980s the British textile industry was in steep decline. Production was scaled back and Salts Mill was finally closed in 1986. To the rescue came another entrepreneur, Jonathan Silver who bought the Mill and within months opened a gallery exhibiting the work of Bradford-born artist David Hockney. During the 1990s more of the mill was brought back into use and filled with businesses, shops and the famous Salts Diner.

Accredited as a UNESCO World Heritage Site there are many reasons why you should visit Saltaire, from the spectacular architecture, to the boutique independent shops, bars and restaurants.



# ADMIRE THE STUNNING ARCHITECTURE

Walking round the village you will find some beautiful buildings all with their own fascinating history. Here are some to look out for...

## SALTS MILL

When Salts Mill opened in 1853, it was the biggest factory in the world. 3000 workers toiled away at 1200 looms, producing 30,000 yards of cloth every single day.

## FACTORY SCHOOL

Mill owners were required to ensure the children they employed received an education, but not to provide facilities. Sir Titus far exceeded his duties and built this beautiful school fully-equipped to provide his young employees with a good education. It opened in 1868 and now forms part of Shipley College.

## VICTORIA HALL

Opened in 1871 as the Saltaire Club and Institute it offered a library, dance hall and lecture theatre, meeting rooms, billiards room and gymnasium. Now the hall hosts regular events including craft and vintage fairs and is also home to a wurlitzer organ with regular afternoon and evening concerts.

## ALMSHOUSES

Elderly or infirm persons of good 'moral character' were provided with free living accommodation and a pension in each of these forty-five almshouses completed in 1868.

See *Heritage Trail Map on reverse for details*

## SALTAIRE UNITED REFORMED CHURCH

Completed in 1859 the church is an outstanding example of Italianate religious architecture and is now a Grade 1 listed building. Sir Titus Salt is interred in the mausoleum.

# FESTIVALS & EVENTS

There's always something happening in Saltaire with regular live music events at Victoria Hall and Caroline Street Club to monthly markets and a great choice of vintage, craft and antique fairs.

## SALTAIRE ARTS TRAIL

May 5<sup>th</sup> - 7<sup>th</sup> is Saltaire Arts Trail. This event offers visitors an imaginative visual arts programme, celebrating the village's rich heritage, and offering opportunities to both emerging and established artists.

## DRAGON BOAT FESTIVAL

This colourful event is now in its fourth year and is a sight to behold. Over 30 teams will race to victory on the River Aire on 22<sup>nd</sup> - 24<sup>th</sup> June in Roberts Park.

## SALTAIRE FESTIVAL

September brings Saltaire to life. With ten days of excellent art exhibitions and installations, mouth-watering food demonstrations, vibrant street markets as well as live music and comedy.



# RETAIL THERAPY

Shopping in Saltaire is a real pleasure with its many independent shops and boutiques.

Make sure you explore the whole village and take a walk up Victoria Road. Discover the delightful shops such as 'The Saltaire Vintage Shop' or the 'Rad Studio' for modern fun gifts. 'Art Parade' is a craft and photography gallery featuring a wide range of exciting collections by artists.

Continue onto Bingley Road (see map for location) for a variety of shops, cafes and restaurants. Drop into 'Serendipity' or 'The Butterfly Rooms' and explore the wonderful selection of gifts and home ware.

If you are feeling creative then call into 'Salts Pots' where you can design and paint your own pottery.



# VISIT SALTS MILL

Home to one of the largest collections of David Hockney's art

On the ground floor you will find the 1853 Gallery which houses a permanent exhibition of works by David Hockney. On the second floor, Gallery 2 shows a varied mix of temporary displays throughout the year. Continue up to the third floor where you will find People and Process, an exhibition telling the story of Salts through objects great and small and don't miss the stunning, 'The Arrival of Spring' collection by David Hockney. At the rear of the Gallery is the Saltaire Exhibition, a fascinating exploration of Saltaire's history from 1853 to the present day.

The Mill also houses many independent retailers, selling intricate handmade jewellery to stylish antiques. Peruse the shelves of 'Salts Book and Poster shop' and 'The Home', which stocks luxury home wares. For refreshments, pop into 'Salts Diner' or head up to the third floor for a more refined dining experience at 'Café in to the Opera'.

Victoria Road, Saltaire, BD18 3LA (Use BD17 7EF in your sat nav for the car park)  
Tel: 01274 531163. [www.saltsmill.org.uk](http://www.saltsmill.org.uk)  
Mon - Fri 10:00 - 17:30  
Sat - Sun 10:00 - 18:00 - Admission free.

# GREEN SPACES & WATERWAYS

Titus Salt deliberately built Saltaire next to the Leeds Liverpool Canal and the railway so he could distribute his products quickly and cheaply.

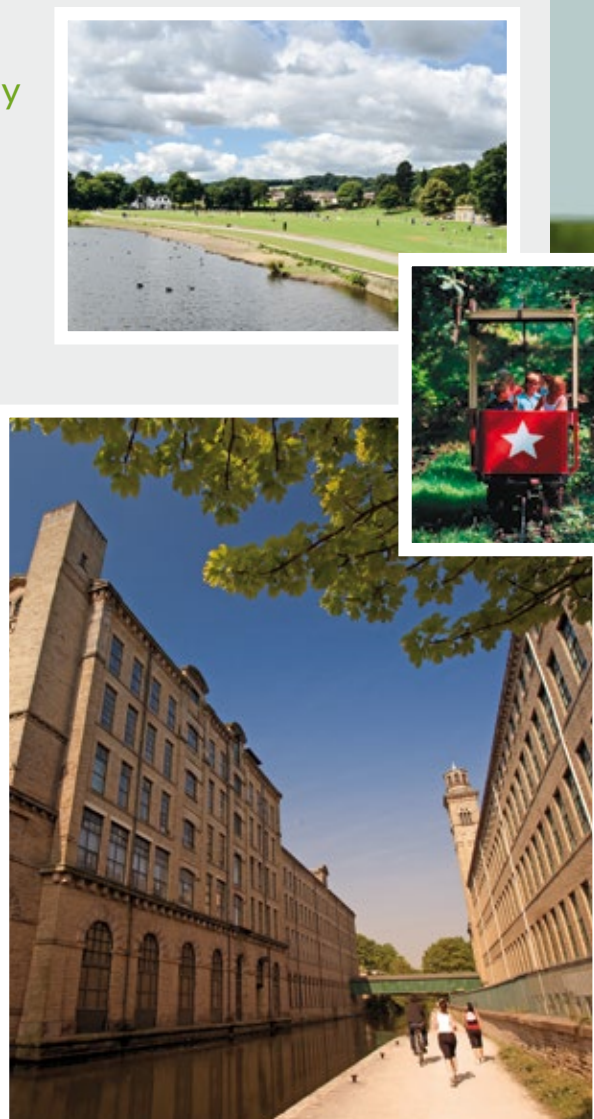
Today the canal is used for leisure and has an excellent towpath towards Bingley and Leeds, which forms Route 696 of the National Cycle Network. Also known as the Airedale Greenway, it provides an excellent place to both cycle and walk. For the more adventurous why not try a section of the The Dales High Way, starting in Saltaire and crossing over to Ilkley before heading up to Appleby in Westmoreland.

Across the river lies Roberts Park where you can take a stroll next to the river, enjoy a concert at the bandstand or watch a game of cricket.

Alternatively there are many enjoyable walks from Saltaire for all ages and abilities, you can head up to Shipley Glen, using the Shipley Glen Tramway and then onto Baildon Moor.

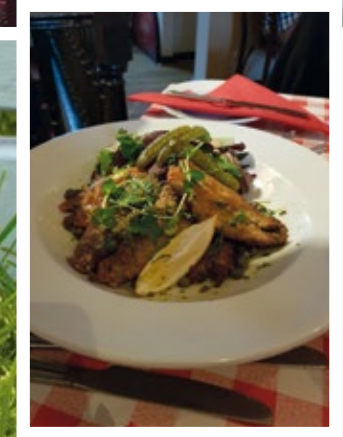
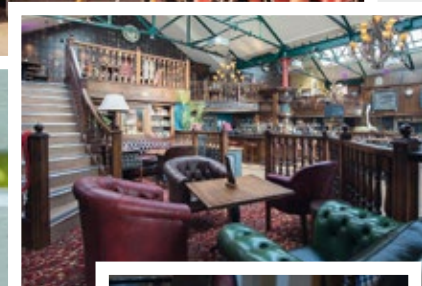
Saltaire is situated only a few miles from two Walkers are Welcome towns, Baildon and Bingley. This accolade means when you visit you can be sure you will be greeted warmly by businesses understanding your requirements.

For more information:  
[www.visitbradford.com/explore](http://www.visitbradford.com/explore)



# FOOD & DRINK

Saltaire has a great selection of places to eat and drink so why not treat yourself!



## THE CAP AND COLLAR

The micro-pub opened in November 2014. Serving a range of real ales this modern pub has a friendly atmosphere and offers visitors and their furry sidekicks a drinks patio for those sun drenched afternoons.

## DON'T TELL TITUS

One of the most happening spots in Saltaire, this Bar-Restaurant-Lounge is situated over two floors and has relaxed and laid back atmosphere.

## THE TERRACE

In the heart of Saltaire the Terrace has a reputation for stunning French cuisine and warm hospitality. Serving delicious food throughout the day and into the evening it's an ideal venue for lunch with friends, a family celebration or a romantic rendez-vous.

## THE HOP

The Hop Saltaire Bar & Kitchen is an exciting new concept combining great food, real ales, continental lagers and live music. The innovative menu consists of authentic wood-fired pizzas, traditional pub classics and internationally influenced a la carte dining.

## THE BOATHOUSE

Wonderfully situated on the banks of the River Aire the Boathouse is the perfect place to meet friends and socialise, enjoy some restorative food and drink after a good walk, or simply relax and watch the river flow by.

## SALTAIRE BREWERY

International award-winning Saltaire Brewery is dedicated to the production of high quality ales with a contemporary twist. Well-known for its Saltaire Blonde beer, you can enjoy a drink in the laid back atmosphere of the bar or buy it bottled and take it with you. So if you are a beer lover, there's no better place!

# VISIT SHIPLEY



Take a stroll to the town of Shipley only a short 10 minute walk from the village, and find a town that takes it food seriously. Visit the Aagrah, an award winning restaurant that specialises in Kashmiri cuisine - other popular choices include The Tapas Tree, Yo Yo Bar and Restaurant, the Fox and the Waterside Restaurant and Bar. After a day exploring Saltaire this is the perfect place to relax and indulge yourself in some great food and drink.

## ENJOY A STAY WITH US

There is a great selection of places to stay in and around Saltaire from bed and breakfasts to luxury serviced apartments.

Stay a bit longer and explore what's on offer to make your trip truly memorable. To find out more about where to stay visit [www.visitbradford.com/accommodation](http://www.visitbradford.com/accommodation)



The wording in this publication can be made available in other formats such as large print and Braille. Please call 01274 433678.